

# ***Otter***<sup>®</sup>

## **2025 CATALOG**







# LEGENDARY SHELTERS

At Otter®, we're built on a relentless commitment: to create the most rugged sleds and ice shelters on the market—then push their limits even further.

We are hole drillers, ice campers, and tip-up tacticians. But above all, we're people who love being outdoors—especially in the coldest, toughest conditions nature can throw at us.

Whether you're chasing new adventures or soaking in time with loved ones, we know what it takes to be here. And we know how much these moments mean.

That's why every Otter® product is built to our highest standards—because we know they need to exceed yours. Engineered with unmatched durability and relentless innovation, Otter® gear delivers the reliability you depend on, season after season.

When you see an Otter® ice house, know that it represents more than just shelter. It represents a challenge accepted. It's about fishing smarter, traveling farther, and embracing early-morning on the ice.

In the end, it's your experience that matters most. And at Otter®, we're proud to help turn your boldest days into your best memories.





# OTTER OUTDOORS 2025

Otter® Outdoors sets the standard in ice fishing gear. Our full lineup of ultra-durable shelters, Roto-Molded sleds, and premium accessories is built for serious anglers who demand performance, reliability, and rugged dependability on the ice. Every product we make is driven by relentless innovation, field-tested durability, and a commitment to quality that has made Otter® the most trusted name in hardwater fishing. From our legendary sleds and shelters to our industry-best accessories, Otter® gear is designed to help you fish longer, stay warmer, and get more out of every trip.

## TABLE OF CONTENTS

X-OVER SHELTERS .....	PG. 1-14
VORTEX PRO HUBS .....	PG. 15-20
WINDBREAK V-HUB .....	PG. 21-22
SLEDS .....	PG. 23-28
ACCESSORIES .....	PG. 29-40
ROD CASES .....	PG. 41-42
ATV ACCESSORIES .....	PG. 43-44
ATV TRAILERS .....	PG. 45-46

## FEATURED NEW

PRO XS X-OVER SHELTERS .....	PG. 3-6
XTR X-OVER SHELTERS .....	PG. 7-12
WINDBREAK V-HUB .....	PG. 21-22
SONAR SLED .....	PG. 27-28
HDX HYFAX KITS .....	PG. 31
SHELTER FLOOR TILES .....	PG. 34
32 IN. BUMP BOARD .....	PG. 34
PORTABLE LED LIGHT KIT .....	PG. 34



# X-OVER SHELTERS

## INNOVATION AND QUALITY THAT STAND OUT

Otter's new line of X-Over Shelters gives anglers the quality and comfort they've come to expect from Otter fish houses with innovative new features and style. Each shelter is built on an ultra-tough, USA made Roto-Molded Otter sled, lightweight square tube aluminum frame with a patented Quick Switch system, and a patented Otter ThermalTec™ shell for warmth. These X-Over shelters are exactly the fishing buddy you want out on the lake with you.





# NEW PRO XS FEATURES

## PRO XS SERIES

Otter's Pro XS series shelter is built on the cross-link seating system. Featuring Pro Swivel Seats that allow anglers comfort and versatility in their shelter set-up. The Pro XS Series features exclusive accessories allowing anglers to further customize their shelter to fit their needs.

## THERMALTEC™ CANVAS

The most advanced thermal shell on the market, built with Otter's patented ThermalTec™ fabric and 1200 denier canvas shell, ensures you're warm on the coldest, windiest, days.

## SUPERIOR STRUCTURE

All X-Over shelters feature super strong oversized square tube aluminum frames to prevent bending. Ultra-Glide System allows the frame to slide easily back and forth.

## DUAL COIL ZIPPERS

All Otter shelter tarps are built with extra strong dual coil zippers that pull easily and hold up to years of abuse through the toughest, coldest conditions.

## PRO SWIVEL SEATS

Comfort, freedom to move, added space, and seating flexibility are exactly what you get with the Pro XS's pro bucket seats. Built using the comfort and quality Otter is known for, these seats deliver all-day support.



## SIDE DOORS & QUICK SWITCH FRAME

Easily switch to side entry doors while maintaining front door access. Sets up like traditional shelters and converts to side access in seconds. Available on all Otter X-Over shelters.

## ROTO-MOLDED SLED

All Otter Sleds feature our legendary Roto-Molded construction that has led the industry for decades. Manufactured in the USA and built with the ultimate blend of strength and durability.







# NEW PRO XS X-OVER SHELTERS

The Otter Pro XS series of ice shelters offers anglers a top-of-the-line ice shelter with the spacious and comfortable cross-link seating system. On the exterior, the ThermalTec™ 1200-denier insulated shell provides warmth and reduces condensation. The patented Quick Switch Frame is made from durable square tubing, making it one of the strongest and most user-friendly fish houses on the market. Built on a rugged Otter Roto-Molded Pro Series Sled, the Pro XS is a top choice for ice anglers.



WARNING: Cancer and Reproductive Harm - www.P65Warnings.ca.gov

WARNING: Cancer and Reproductive Harm - www.P65Warnings.ca.gov



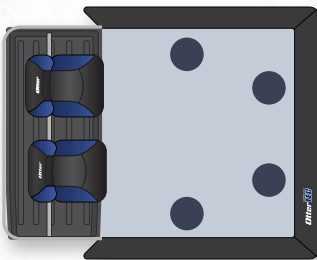
## NEW PRO XS CABIN

201848 \$1,249<sup>99</sup>

SIZE: 22 Sq ft.  
SEATING: 2 Seats (room for 3rd optional seat)  
SIZE SET-UP: 66"L x 84"W x 70.5"H  
WEIGHT: 103 Lbs.

### FEATURES:

- ▲ FRONT, SIDE AND REAR ACCESS DOORS
- ▲ DUAL COIL ZIPPERS
- ▲ ROTO-MOLDED PRO SLED
- ▲ MOLDED-IN HITCH POCKETS
- ▲ CROSS-LINK SEATING SYSTEM, SWIVEL SEATS WITH FOLDING BACKRESTS
- ▲ EASY FRAME RELEASE



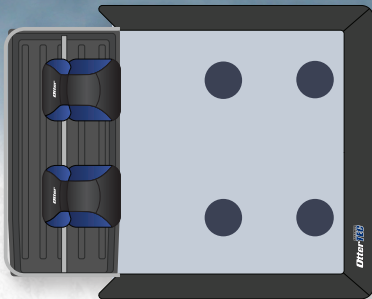
## NEW PRO XS LODGE

201849 \$1,349<sup>99</sup>

SIZE: 30 Sq ft.  
SEATING: 2 Seats (room for 3rd optional seat)  
SIZE SET-UP: 74"L x 97"W x 77"H  
WEIGHT: 124 Lbs.

### FEATURES:

- ▲ FRONT, SIDE AND REAR ACCESS DOORS
- ▲ DUAL COIL ZIPPERS
- ▲ ROTO-MOLDED PRO SLED
- ▲ MOLDED-IN HITCH POCKETS
- ▲ CROSS-LINK SEATING SYSTEM, SWIVEL SEATS WITH FOLDING BACKRESTS
- ▲ EASY FRAME RELEASE



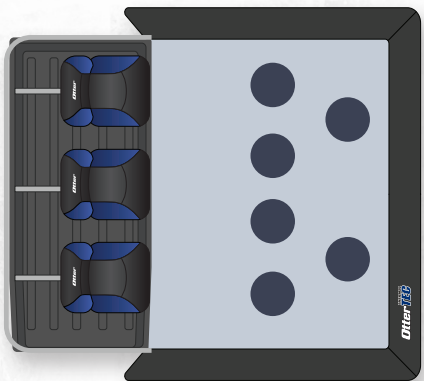
## NEW PRO XS RESORT

201850 \$1,649<sup>99</sup>

SIZE: 35 Sq ft.  
SEATING: 3 Seats  
SIZE SET-UP: 84"L x 106"W x 80"H  
WEIGHT: 145 Lbs.

### FEATURES:

- ▲ FRONT, SIDE AND REAR ACCESS DOORS
- ▲ DUAL COIL ZIPPERS
- ▲ ROTO-MOLDED PRO SLED
- ▲ MOLDED-IN HITCH POCKETS
- ▲ BRACKETED SEATING SYSTEM, SWIVEL SEATS WITH FOLDING BACKRESTS
- ▲ EASY FRAME RELEASE



Pro XS swivel seats give anglers maximum comfort



# NEW XTR FEATURES

## XTR SERIES

The XTR features all the creature comforts and quality Otter is known for, with the addition of the most versatile seating system in the ice shelter market.

## THERMALTEC™ CANVAS

The most advanced thermal shell on the market, built with Otter's patented ThermalTec™ fabric and 600 denier canvas shell, ensures you're warm on the coldest, windiest, days.

## SUPERIOR STRUCTURE

All X-Over shelters feature super strong oversized square tube aluminum frames to prevent bending. Ultra-Glide System allows the frame to slide easily back and forth.

## DUAL COIL ZIPPERS

All Otter shelter tarps are built with extra strong dual coil zippers that pull easily and hold up to years of abuse through the toughest, coldest conditions.

## ROTO-MOLDED SLED

All Otter Sleds feature our legendary Roto-Molded construction that has led the industry for decades. Manufactured in the USA and built with the ultimate blend of strength and durability.

## SIDE DOORS & QUICK SWITCH FRAME

Easily switch to side entry doors while maintaining front door access. Sets up like traditional shelters and converts to side access in seconds. Available on all Otter X-Over shelters.

## NEW SPLIT BENCH SEAT

An industry first reclining bench seat that provides added versatility to already best-in-class comfort. Each side of the split bench can recline independently, creating more space for a workstation and quicker access to your gear.



Independently fold bench forward



Independently recline bench



Fully recline bench







# NEW XTR X-OVER SHELTERS

The Otter XTR series is ready for whatever you throw at it. It features the most versatile seating system on the market with its new independent split bench seat. The XTR's shelter tarp is made from a ThermalTec™ 600-denier insulated shell that holds in heat and cuts down on condensation. The patented Quick Switch Frame is made from durable square tubing, making it one of the strongest and most user-friendly fish houses on the market. All of it rides on the ultra-durable, Roto-Molded sled, making the XTR an easy pick for serious ice anglers.



The XTR's independent reclining bench makes the perfect spot for your furry friend

WARNING: Cancer and Reproductive Harm - www.P65Warnings.ca.gov

WARNING: Cancer and Reproductive Harm - www.P65Warnings.ca.gov



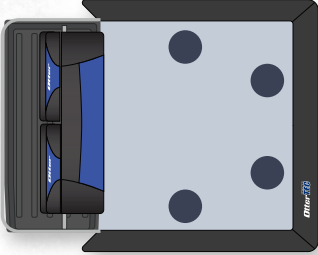
## NEW XTR COTTAGE

201864 \$949<sup>99</sup>

SIZE: 16.8 Sq ft.  
SEATING: 38" Wide Split Bench  
SIZE SET-UP: 54"L x 79"W x 65"H  
WEIGHT: 80 Lbs.

### FEATURES:

- ▲ FRONT, SIDE AND REAR ACCESS DOORS
- ▲ DUAL COIL ZIPPERS
- ▲ ROTO-MOLDED PRO SLED
- ▲ MOLDED-IN HITCH POCKETS
- ▲ RECLINING SPLIT BENCH
- ▲ EASY FRAME RELEASE



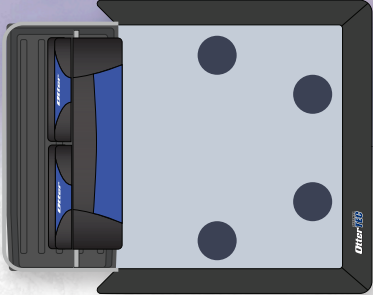
## NEW XTR CABIN

201865 \$1099<sup>99</sup>

SIZE: 22 Sq ft.  
SEATING: 48" Wide Split Bench  
SIZE SET-UP: 64"L x 84"W x 72.5"H  
WEIGHT: 95 Lbs.

### FEATURES:

- ▲ FRONT, SIDE AND REAR ACCESS DOORS
- ▲ DUAL COIL ZIPPERS
- ▲ ROTO-MOLDED PRO SLED
- ▲ MOLDED-IN HITCH POCKETS
- ▲ RECLINING SPLIT BENCH
- ▲ EASY FRAME RELEASE



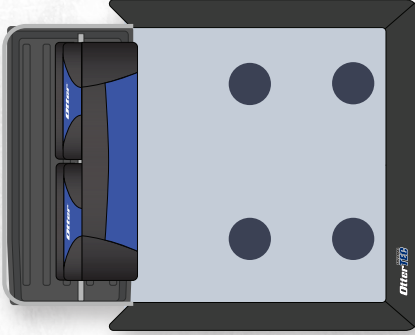
## NEW XTR LODGE

201866 \$1199<sup>99</sup>

SIZE: 30 Sq ft.  
SEATING: 58" Wide Split Bench  
SIZE SET-UP: 74"L x 97"W x 77"H  
WEIGHT: 120 Lbs.

### FEATURES:

- ▲ FRONT, SIDE AND REAR ACCESS DOORS
- ▲ DUAL COIL ZIPPERS
- ▲ ROTO-MOLDED PRO SLED
- ▲ MOLDED-IN HITCH POCKETS
- ▲ RECLINING SPLIT BENCH
- ▲ EASY FRAME RELEASE







# NEW XTR RESORT SLEEPER



**201867 \$1,599<sup>99</sup>**

SIZE: 35 Sq ft.

SEATING: 66" WIDE Reclining 3pc Split Bench

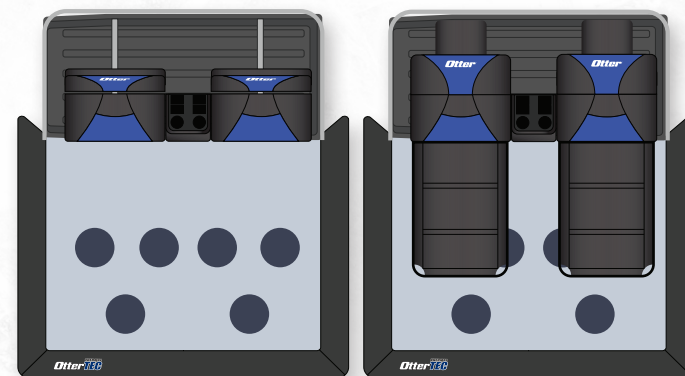
(2 Headrests and cots included)

SIZE SET-UP: 84"L x 106"W x 80"H

WEIGHT: 145 Lbs.

## FEATURES:

- ▲ FRONT, SIDE AND REAR ACCESS DOORS
- ▲ DUAL COIL ZIPPERS
- ▲ ROTO-MOLDED PRO SLED
- ▲ MOLDED-IN HITCH POCKETS
- ▲ RECLINING 3 PCS. SPLIT BENCH



WARNING: Cancer and Reproductive Harm - www.P65Warnings.ca.gov

WARNING: Cancer and Reproductive Harm - www.P65Warnings.ca.gov



## A X-OVER BUILT FOR ICE CAMPING

The XTR Resort Sleeper X-Over gives ice anglers the option to transform the best mobile fishing shelter system into an ice camping setup in seconds. Fold the 3-piece bench flat for a single sleeper position or easily attach the headrest and cot sections to create a 2-man sleeper.







## XT HIDEOUT

The XT Hideout is the ultimate 1-person flipover shelter. It features a wide-back Roto-Molded XT sled with molded-in cup and accessory pockets and a removable swivel seat. The XT Hideout provides maximum fishable area with minimum sled footprint for easy on-ice transport.

**200960 \$599<sup>99</sup>**

SIZE: 12.6 Sq ft.

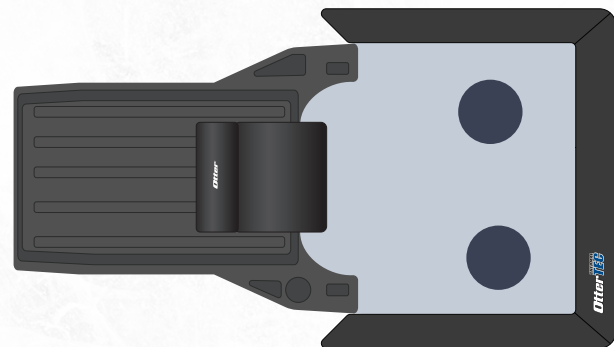
SEATING: 1 Removable Swivel Seat

SIZE SET-UP: 108"L x 38"W x 60"H

WEIGHT: 59 Lbs.

### FEATURES:

- ▲ FRONT ACCESS DOOR
- ▲ DUAL COIL ZIPPERS
- ▲ ROTO-MOLDED WIDE BACK XT SLED



WARNING: Cancer and Reproductive Harm - www.P65Warnings.ca.gov





# VORTEX PRO HUB SERIES

THE MOST FEATURE-RICH HUB SHELTERS ON THE MARKET

When you're looking for the ultimate in portability and versatility, look for a Vortex Pro Hub. With a complete range of sizes to accommodate two to eight people, they're light, and easy to throw in a car, truck, or on the sled or ATV. Use them for shelter on the lake, days at the blustery fall soccer game or give ice camping a try. Designed with a full set of accessories to make your hub experience the best it can be.



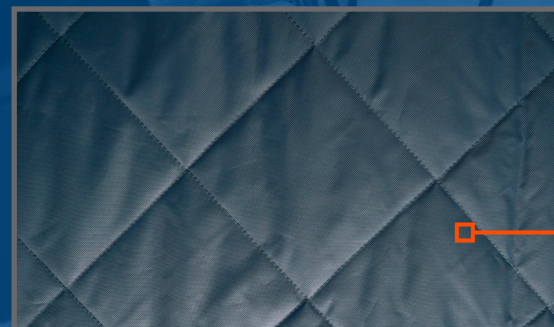
## TPU WINDOWS

All Otter Vortex Pro hubs feature removable TPU windows. On cold days these windows securely attach to the house keeping out any drafts but can also be easily removed to help regulate the temperature of the house or increase ventilation.



## STORAGE POCKETS

Otter Vortex Hubs are outfitted with integrated interior storage pockets that keep your gear organized and within an arms reach.



## THERMALTEC™ CANVAS

The most advanced thermal shell on the market, built with Otter's patented ThermalTec™ fabric and 600 denier canvas shell, to keep you warm on the coldest, windiest, days.



## FULL DOORS

All Vortex Hubs feature oversized no-trip full doors that allow for easy in and out of the shelter.

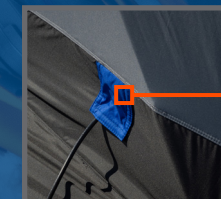
## Ice-Lock™ Anchor System

3-point corner anchoring system minimizes shelter movement due to wind. Reinforced corners increase on-ice security.



## PROPANE PORT

Dedicated propane hose port gives anglers an organized way to keep their propane tank connected to their heater without running it underneath the house.



## Shelter Strap & Bag

Otter Shelter strap and oversized bag makes packing up a breeze.





# VORTEX PRO HUBS

EVERYTHING FROM QUICK TRIPS, TO BIG GROUPS, TO ICE CAMPING OVERNIGHTS, VORTEX HUBS HAVE YOU COVERED.



## VORTEX PRO HUB

Otter Vortex Pro Hubs are one of the most versatile shelters on the market. They pack small enough to fit in virtually any vehicle when traveling to or on the ice. They come in a variety of sizes and can accommodate two to eight people. Otter's Vortex Pro Hub comes standard with the quality features Otter is known for like ThermalTec™ Canvas, Ice-Lock™ anchoring system, and many more.



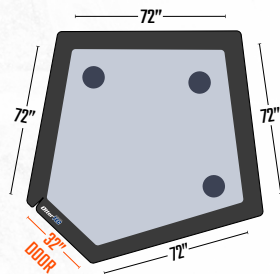
## VORTEX PRO CABIN

201644 \$399<sup>99</sup>

SIZE: 48 Sq ft.  
HEIGHT: Ceiling 75" / Wall 67"  
COLLAPSED DIM: 56"L x 11"H x 11"D  
WEIGHT: 36 Lbs.

### FEATURES:

- ▲ FULL DOOR WITH DUAL COILED ZIPPERS
- ▲ ICE-LOCK™ ANCHORING SYSTEM
- ▲ REMOVABLE TPU WINDOWS
- ▲ ROD HOLDERS & STORAGE POCKET
- ▲ OVERHEAD CARGO NET
- ▲ PROPANE PORT
- ▲ QUICK RELEASE PACKING STRAP
- ▲ CARRY BAG



WARNING: Cancer and Reproductive Harm - www.P65Warnings.ca.gov

WARNING: Cancer and Reproductive Harm - www.P65Warnings.ca.gov



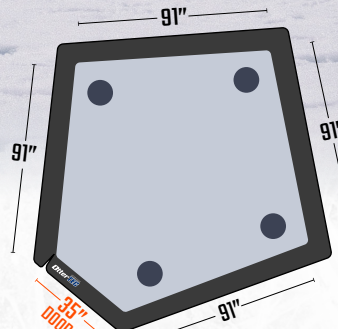
## VORTEX PRO LODGE

201625 \$549<sup>99</sup>

SIZE: 74 Sq ft.  
HEIGHT: Ceiling 79" / Wall 69"  
COLLAPSED DIM: 70"L x 11.5"H x 11.5"D  
WEIGHT: 48 Lbs.

### FEATURES:

- ▲ FULL DOOR WITH DUAL COILED ZIPPERS
- ▲ ICE-LOCK™ ANCHORING SYSTEM
- ▲ REMOVABLE TPU WINDOWS
- ▲ ROD HOLDERS & STORAGE POCKET
- ▲ OVERHEAD CARGO NET
- ▲ PROPANE PORT
- ▲ QUICK RELEASE PACKING STRAP
- ▲ CARRY BAG



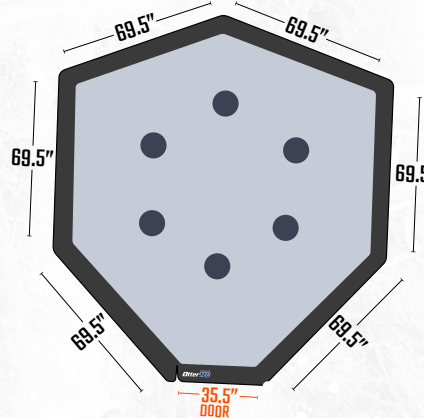
## VORTEX PRO RESORT

201645 \$709<sup>99</sup>

SIZE: 103 Sq ft.  
HEIGHT: Ceiling 82" / Wall 69"  
COLLAPSED DIM: 73"L x 13.5"H x 13.5"D  
WEIGHT: 64 Lbs.

### FEATURES:

- ▲ FULL DOOR WITH DUAL COILED ZIPPERS
- ▲ ICE-LOCK™ ANCHORING SYSTEM
- ▲ REMOVABLE TPU WINDOWS
- ▲ ROD HOLDERS & STORAGE POCKET
- ▲ OVERHEAD CARGO NET
- ▲ PROPANE PORT
- ▲ QUICK RELEASE PACKING STRAP
- ▲ CARRY BAG





# VORTEX MONSTER HUBS

## ENOUGH ROOM FOR THE WHOLE CREW.



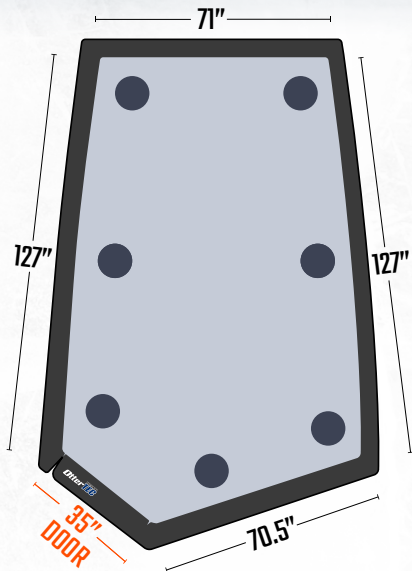
### VORTEX PRO MONSTER CABIN

201742 \$699<sup>99</sup>

SIZE: 82 Sq ft.  
HEIGHT: Ceiling 75" / Wall 66"  
COLLAPSED DIM: 59"L x 13.5"H x 12"D  
WEIGHT: 59 Lbs.

#### FEATURES:

- ▲ FULL DOOR WITH DUAL COILED ZIPPERS
- ▲ ICE-LOCK™ ANCHORING SYSTEM
- ▲ REMOVABLE TPU WINDOWS
- ▲ ROD HOLDERS & STORAGE POCKET
- ▲ OVERHEAD CARGO NET
- ▲ PROPANE PORT
- ▲ QUICK RELEASE PACKING STRAP
- ▲ CARRY BAG



WARNING: Cancer and Reproductive Harm - www.P65Warnings.ca.gov

WARNING: Cancer and Reproductive Harm - www.P65Warnings.ca.gov



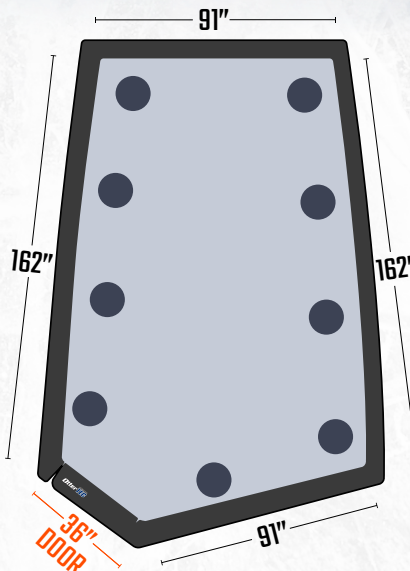
### VORTEX PRO MONSTER LODGE

201646 \$849<sup>99</sup>

SIZE: 132 Sq ft.  
HEIGHT: Ceiling 79" / Wall 68"  
COLLAPSED DIM: 68"L x 13.5"H x 12"D  
WEIGHT: 73 Lbs.

#### FEATURES:

- ▲ FULL DOOR WITH DUAL COILED ZIPPERS
- ▲ ICE-LOCK™ ANCHORING SYSTEM
- ▲ REMOVABLE TPU WINDOWS
- ▲ ROD HOLDERS & STORAGE POCKET
- ▲ OVERHEAD CARGO NET
- ▲ PROPANE PORT
- ▲ QUICK RELEASE PACKING STRAP
- ▲ CARRY BAG





# NEW WINDBREAK V-HUB

The Windbreak V-Hub offers anglers a lightweight, portable, wind blocking solution that keeps you on the ice longer in a small light weight package. The Windbreak V-Hub features a 2 panel hub design that sets up as an adjustable V for blocking wind. It works great as a 1 to 2 man shelter or use as a temporary break from the elements for larger groups.



WARNING: Cancer and Reproductive Harm - www.P65Warnings.ca.gov



## NEW WINDBREAK V-HUB

201846 \$109<sup>99</sup>

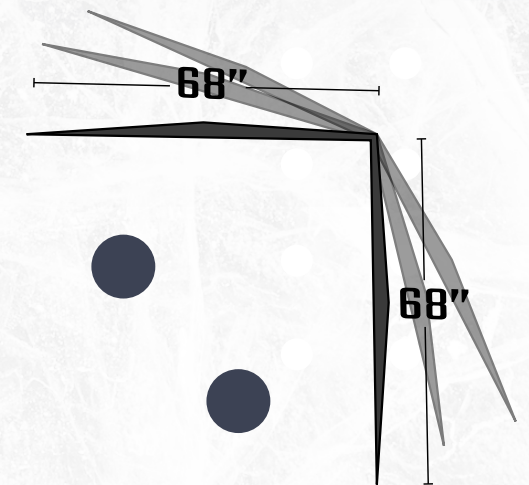
SETUP DIMENSIONS: 136" L x 57.5" H

COLLAPSED DIMENSIONS: 46" L x 7" W x 7" D

WEIGHT: 9.25 Lbs.

### FEATURES:

- ▲ WIND BLOCKING HUB SOLUTIONS FOR ANGLERS
- ▲ QUICK AND EASY TO SET UP
- ▲ 2-PANEL HUB CONSTRUCTION WITH EXCLUSIVE ICE-LOCK™ ANCHORING SYSTEM
- ▲ 5 SELF-TAPPING ICE ANCHORS AND CARRY BAG INCLUDED





# LEGENDARY SLED SERIES

PRO + SPORT SLEDS

All Otter Sleds feature our legendary Roto-Molded construction that has led the industry for decades. Built for the ultimate blend of strength and durability. Versatile enough to handle the toughest tasks, big or small. Our unique manufacturing process has been fine-tuned and delivers uniform wall thickness that evenly distributes more material, helping absorb the shock and stress to the sled. They're made for any season, tested to -40°F, used for almost any reason or application and built to last a lifetime. Roto-Molded with pride in Minnesota, USA.







**MINI PRO 200817** \$64<sup>99</sup>  
43"L x 23"W x 10.5"H



**SMALL PRO 200818** \$89<sup>99</sup>  
55"L x 27"W x 13"H



**SMALL ULTRA-WIDE PRO 200816** \$114<sup>99</sup>  
56"L x 32"W x 13"H



**MEDIUM PRO 200819** \$144<sup>99</sup>  
65"L x 32"W x 15"H



**MAGNUM PRO 200820** \$189<sup>99</sup>  
75"L x 38"W x 15"H

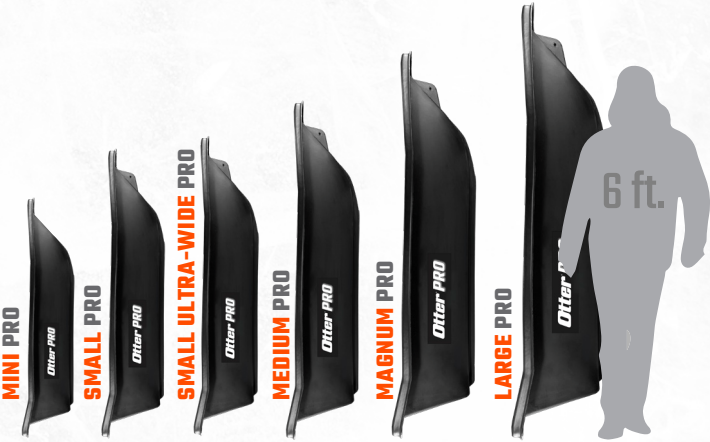


**LARGE PRO 200821** \$299<sup>99</sup>  
85"L x 44"W x 17"H



PRO SLEDS

- ▲ MOLDED-IN HITCH AND HYFAX RUNNER POCKETS \*EXCEPT MINI
- ▲ THICK, RUGGED BOTTOM WITH MOLDED-IN RIBS
- ▲ TOWS SMOOTHLY BEHIND ATV/UTV OR SNOWMOBILE



WARNING: Cancer and Reproductive Harm - www.P65Warnings.ca.gov



**SMALL SPORT 200823** \$59<sup>99</sup>  
43"L x 21"W x 9"H



**MEDIUM SPORT 200825** \$69<sup>99</sup>  
53"L x 25"W x 10"H



**LARGE SPORT 200827** \$89<sup>99</sup>  
64"L x 29"W x 11"H



SPORT SLEDS

- ▲ LIGHTWEIGHT & DESIGNED FOR HAND PULLING
- ▲ TOW ROPE INCLUDED
- ▲ IDEAL FOR EARLY SEASON ICE CONDITIONS



PRO MEDIUM SLED COMBO

200078 \$319<sup>99</sup>

The perfect 4-in-1 package for transporting pop-up and hub style shelters and gear. Includes: Pro Medium Sled, Hyfax Runner Kit, Tow Hitch and Travel Cover



WARNING: Cancer and Reproductive Harm - www.P65Warnings.ca.gov





## NEW SONAR SLED

If you fish with forward facing sonar, the new Sonar Sled is a must have. Forget trying to find ways to haul bulky sonar units from hole to hole, the Sonar Sled is a purpose built sled that covers all your needs. It features a large pocket that fits practically any size sonar shuttle, universal transducer pole holder, front storage compartment, cup holder and additional ports to hold anything you need for a day on the water.



Universal FFS Transducer and pole holder



Stores everything at your fingertips for Run & Gun style fishing



Four rod holders and magnetic closure front compartment to keep your gear safe & Secure

WARNING: Cancer and Reproductive Harm - www.P65Warnings.ca.gov



## NEW SONAR SLED

201895 \$249<sup>99</sup>

SIZE: 44" L x 25" X 13"H

### FEATURES:

- ▲ DESIGNED TO TRANSPORT LARGER SONAR UNITS AND SHUTTLES
- ▲ DESIGNATED CAVITY FOR ADJUSTABLE ICE POLE WITH MOUNTED TRANSDUCER
- ▲ FRONT STORAGE AREA WITH MAGNETIC LID CLOSURE
- ▲ ULTRA STRONG ROTO-MOLDED CONSTRUCTION
- ▲ COMPARTMENT FOR A BUCKET, TACKLE BOX, ROD HOLDER, CUP HOLDER, BAIT PUCKS, AND TOOLS
- ▲ TOW ROPE INCLUDED



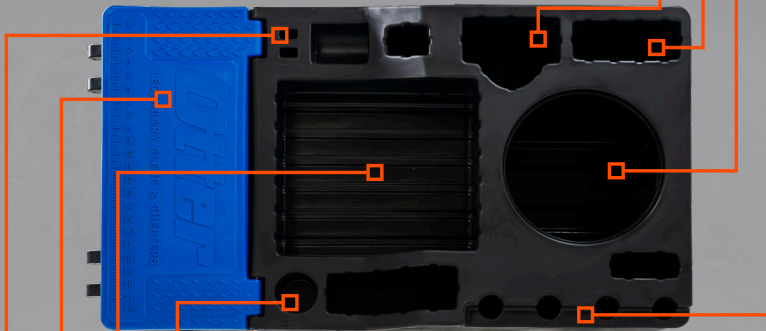
### STORAGE THAT KEEPS YOU ON THE MOVE

**ROD HOLDERS** Four deep rod holders that work with traditional and split-grip ice rods

**BUCKET HOLDER** Dedicated bucket slot perfect for the Otter® 6 gallon bucket or standard 5 gallon buckets

**ACCESSORY SLOT** Large slot opening perfect for long narrow gear like the Otter® Bump Board

**UNIVERSAL SONAR POLE HOLDER** Fits all forward facing transducers on virtually any pole system



**CUP HOLDER** Securely holds cups, mugs, and bottles for convenient access

**UNIVERSAL SONAR SHUTTLE HOLDER** Large 13"W x 15"D shuttle compartment that fits virtually any shuttle

**FRONT STORAGE COMPARTMENT** Magnetic closure compartment keeps gear safe, secure and out of the elements

**TOOL & ACCESSORY PORT** Convenient storage and access for tools like pliers and scissors



# OTTER ACCESSORY SERIES

BUILT TO OUR  
DEMANDING  
STANDARDS

Extreme winter weather activities demand a top quality shelter to get out of the cold. Otter's full line of accessories allows you to outfit your shelter to perfectly match your needs.



# SLED ACCESSORIES



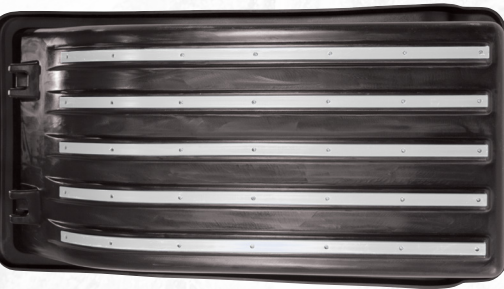
**TRAVEL COVERS** Protect the gear inside of your Otter Sled or Shelter during transport. Heavyweight polyester 600 denier fabric (400 denier on Sport Covers) is extremely durable and water resistant. Sewn-In shock cord to seal out snow, slush, and mud.

Part #	SHELTER TRAVEL COVERS	Price	
200015	Cottage Package Cover	\$74 <sup>99</sup>	Fits all Cottage Fish House Packages
200014	Cabin Package Cover	\$74 <sup>99</sup>	Fits all Cabin Fish House Packages
200016	Lodge Package Cover	\$89 <sup>99</sup>	Fits all Lodge Fish House Packages
200022	Resort Package Cover	\$99 <sup>99</sup>	Fits all Resort Fish House Packages
201019	XT Hideout Package Cover	\$69 <sup>99</sup>	Fits XT Hideout Package

Part #	PRO SLED TRAVEL COVERS	Price	Part #	SPORT SLED TRAVEL COVERS	Price
200023	Pro Small Sled Cover	\$64 <sup>99</sup>	200024	Sport Small Sled Cover	\$19 <sup>99</sup>
200025	Pro Small Ultra-Wide Sled Cover	\$59 <sup>99</sup>	200082	Sport Medium Sled Cover	\$29 <sup>99</sup>
200020	Pro Medium Sled Cover	\$64 <sup>99</sup>	200018	Sport Large Sled Cover	\$34 <sup>99</sup>
200019	Pro Magnum Sled Cover	\$84 <sup>99</sup>			
200017	Pro Large Sled Cover	\$89 <sup>99</sup>			

# HYFAX KITS

Extend the life of your Otter Sled with our Hyfax Runner Kits. Designed to be durable and reliable, they're a practical option for users who regularly cover long distances through rugged terrain. The high-density plastic runners attach to the molded-in pockets on the bottom of the Otter Sled. HDX & Pro Hyfax runners are 5/8" thick. Sport Hyfax runners are 7/16" thick.



HDX Hyfax pictured. Sled not included in Hyfax kits

Part #	NEW HDX SLED HYFAX RUNNER KITS	Price	Fit	COLOR
201834	Small Pro Sled HDX Hyfax Runner Kit	\$69 <sup>99</sup>	Fits Small Pro Sled	White
201836	Small Ultra-Wide Sled HDX Hyfax Runner Kit	\$79 <sup>99</sup>	Fits Small Ultra-Wide XT Sled. Fits XT and XTR Cottage Pkg	White
201838	Small Ultra-Wide Pro HDX Hyfax Runner Kit	\$79 <sup>99</sup>	Fits Small Ultra-Wide Sled. Fits XT Pro Cottage Pkgs	White
201840	Medium Pro Sled HDX Hyfax Runner Kit	\$89 <sup>99</sup>	Fits Medium Pro and XT Sleds. Fits all Cabin X-Over Pkgs	White
201842	Magnum Pro Sled HDX Hyfax Runner Kit	\$119 <sup>99</sup>	Fits Magnum Pro and XT Sleds. Fits all Lodge X-Over Pkgs	White
201844	Large Pro Sled HDX Hyfax Runner Kit	\$139 <sup>99</sup>	Fits Large Pro and XT Sleds. Fits all Resort X-Over Pkgs	White

Part #	PRO SLED HYFAX RUNNER KITS	Price	Fit	COLOR
201090	Hideout Hyfax Runner Kit	\$49 <sup>99</sup>	Fits Wide-Back XT Sled and XT Hideout	Blue

Part #	SPORT SLED HYFAX RUNNER KITS	Price	Fit	COLOR
201735	Small Sport Sled Hyfax Runner Kit	\$39 <sup>99</sup>	Fits Small Sport Sled	Black
201736	Medium Sport Sled Hyfax Runner Kit	\$39 <sup>99</sup>	Fits Medium Sport Sled	Black
201737	Large Sport Sled Hyfax Runner Kit	\$49 <sup>99</sup>	Fits Large Sport Sled	Black

WARNING: Cancer and Reproductive Harm - www.P65Warnings.ca.gov



WARNING: Cancer and Reproductive Harm - www.P65Warnings.ca.gov



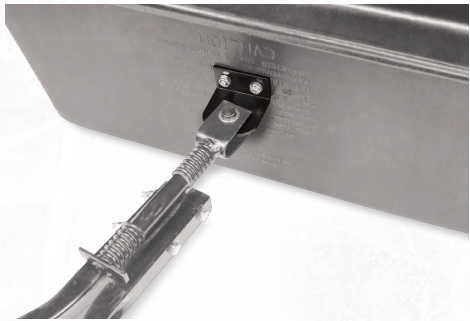
**TOW HITCHES** An easy, convenient option to tow your Otter shelter or Pro sleds. Heavy duty steel tubing with a baked-on finish offers incredible strength and durability. Spring loaded coupler to absorb shocks and pivots during travel.

Part #	TOW HITCHES	Price	
200086	Standard	\$79 <sup>99</sup>	Fits Small, Small UW, Medium & Magnum Pro & XT Sleds. Includes hitch pins.
200085	Large	\$89 <sup>99</sup>	Fits Large Pro & XT Resort Packages. Includes hitch pins.

## HITCH PIVOT

200037 \$59<sup>99</sup>

Quickly fold your hitch over the top of your sled during transport. Saves time and precious cargo space when transporting in a pickup bed. Fits Small/Medium/ Magnum / Large Otter Sled Tow Hitch (200085 & 200086). Hitch sold separately.



Hitch & Sled not included

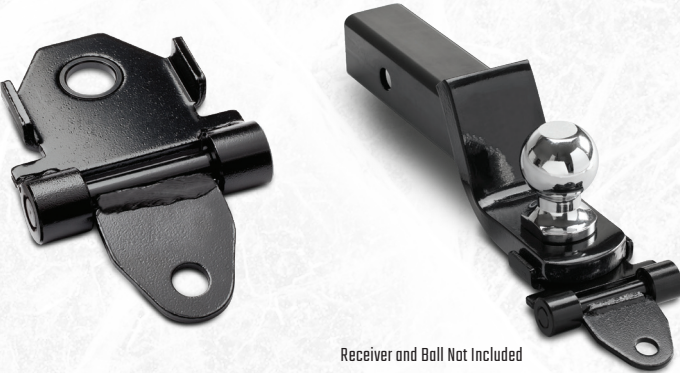
## UNIVERSAL REAR SLED HITCH RECEIVER

200064 \$39<sup>99</sup>

Attach this adapter plate to the rear of your sled to hook multiple sleds together for maximum capacity and tandem towing. Receiver mounts at rear of first sled, allowing attachment of a second hitch and sled. Includes: Backer plate with hardware, hitch receiver and pin. Pin size 7/16 x 1-3/4.

## RECEIVER MOUNT FLIPPER HITCH ADAPTER 200948 \$29<sup>99</sup>

Installs onto 1" and 3/4" ball shanks to allow use of a pin-style hitch. For ATV and UTV use only. Fits most ball mounts up to 2-5/8" wide. Receiver and Ball Mount not included.



Receiver and Ball Not Included



## UNIVERSAL TOW HITCH PIN 200033 \$9<sup>99</sup>

Connects all Otter hitch sizes to an ATV, UTV or snowmobile. Also connects another hitch receiver when towing 2 sleds in tandem one behind the other. Pin size 7/16 x 1-3/4.

## REPLACEMENT HITCH PINS 200036 \$14<sup>99</sup>

Fits hitch (200086) Small, Medium & Magnum Sled Tow Hitch. 2 pack.

## REPLACEMENT HITCH PINS 200034 \$14<sup>99</sup>

Fits hitch (200085) Large Sled Tow Hitch. 2 pack.



## UNIVERSAL TOW HITCH ADAPTER 200032 \$39<sup>99</sup>

Allows the Otter Sled Tow Hitch (200086) to attach to the Otter Pro Mini Sled (200817), all Otter Sport Sleds and most makes and models of cargo sleds.



# NEW ACCESSORIES

Otter continues to innovate ice fishing function and comfort with their new line of accessories. These quality made accessories give anglers a comfortable user friendly experience on the ice.



## NEW SHELTER FLOOR TILES

201800 \$54<sup>99</sup>

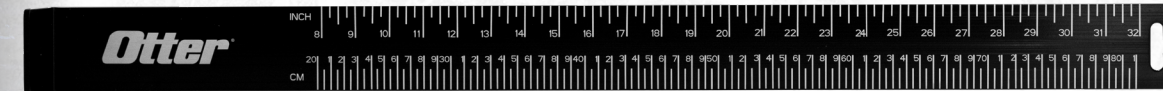
- ▲ 24" X 24" X ¾" INTERLOCKING FOAM TILES
- ▲ 6 PER PACK WITH STORAGE BAG INCLUDED
- ▲ EACH TILE COMES WITH 2 REMOVABLE EDGE PIECES
- ▲ HELPS INSULATE SHELTER, REDUCES NOISE, AND CREATES WATER-RESISTANT FLOOR BARRIER
- ▲ COVERS 24 SQ FT



## NEW BUMP BOARD 32 IN.

201831 \$44<sup>99</sup>

- ▲ QUICKLY AND ACCURATELY MEASURE FISH UP TO 32 INCHES IN LENGTH
- ▲ LASER ETCHED MARKS IN INCHES AND CENTIMETERS
- ▲ DURABLE ANODIZED ALUMINUM CONSTRUCTION
- ▲ DOUBLES AS A TOOL FOR MEASURING ICE THICKNESS



## NEW OTTER PORTABLE LED LIGHT KIT

1000 Lumen light enclosed in a flexible rubber housing. The kits include a universal mounting attachment for hubs, and flipover frames provide convenient interior light placement. On/Off dimmer dial adjusts brightness quickly. Compatible with 12v & 14v lithium and lead acid batteries.



### PORTABLE LED LIGHT KIT 2 PK 201832 \$64<sup>99</sup>

- ▲ IDEAL FOR SMALL TO MID-SIZED HUB STYLE FLIP-OVER SHELTERS
- ▲ 2 1000 LUMEN LED LIGHTS
- ▲ DIMMER DIAL, CORDS, HUB & FLIPOVER CLIPS



### PORTABLE LED LIGHT KIT 4 PK 201833 \$109<sup>99</sup>

- ▲ IDEAL FOR MID-SIZED TO LARGE HUB STYLE FLIP-OVER SHELTERS
- ▲ 4 1000 LUMEN LED LIGHTS
- ▲ DIMMER DIAL, CORDS, HUB & FLIPOVER CLIPS



WARNING: Cancer and Reproductive Harm - www.P65Warnings.ca.gov



# QA SERIES

## QUICK ATTACH UNIVERSAL SHELTER ACCESSORIES



**QA RATTLE REEL 201771 \$19<sup>99</sup>**  
Swing Arm design with adjustable reel extension for flexible placement. Reel knob provides drag resistance. Nylon 66 Construction offers superior impact and cold weather performance. Includes [2] QA Mounts with angle adjustment for flexible accessory placement.



**QA DUAL CUP HOLDER 201769 \$19<sup>99</sup>**  
Dual Size Openings for a wide variety of cup/can/bottle sizes. Nylon 66 Construction offers superior impact and cold weather performance. Includes [2] QA Mounts with angle adjustment for flexible accessory placement.



**QA BUNDLE KIT 201773 \$99<sup>99</sup>**  
This exclusive Otter QA Bundle Kit combines all of Otter's latest Quick Attach [QA] accessories into one convenient, cost-effective bundle.

- Includes:
- 1 - QA Multi Shelf
  - 2 - QA Rattle Reels
  - 1 - QA Dual Cup Holder
  - 1 - QA Dual Rod Holder
  - 8 - QA Mounts



**QA DUAL ROD HOLDER 201772 \$24<sup>99</sup>**  
Two Extended tube rod holders work great with standard and split-grip rods. Swing Arm design allows flexible rod placement. Powder Coated Steel Construction. Includes [2] QA Mounts with angle adjustment for flexible accessory placement.



**QA MULTI-SHELF 201770 \$29<sup>99</sup>**  
Shelf features lure holders, phone pocket, tool holders, bait puck storage and misc. item space with raised edge. Nylon 66 Construction offers superior impact and cold weather performance. Includes [2] QA Mounts with angle adjustment for flexible accessory placement.



WARNING: Cancer and Reproductive Harm - www.P65Warnings.ca.gov



**FOLDING ICE SCOOP 201731 \$39<sup>99</sup>**  
The new Otter Folding Ice Scoop offers the pinnacle of design and convenience to all ice anglers. With molded-in measurement marks, precision chisel, and bottom-of-ice stop, this is the perfect scoop to measure ice for convenience and safety. 40" long when extended, folds in half.



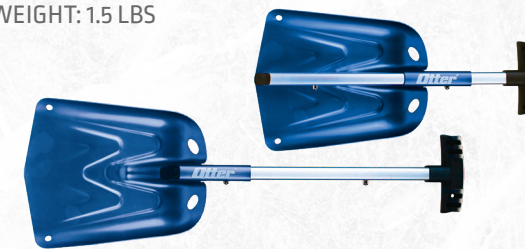
**QUICK-SNAP UNIVERSAL ICE ANCHOR TOOL 201179 \$24<sup>99</sup>**  
The Otter Quick-Snap Ice Anchor Tool is engineered for easy one-handed operation. Ice anchors securely snap into place allowing for easy installation and removal of ice anchors. Durable powder coat finish and fully welded steel construction for long lasting durability. Fits most screw in type ice anchors. Attaches to any cordless drill or 1/4" impact driver.



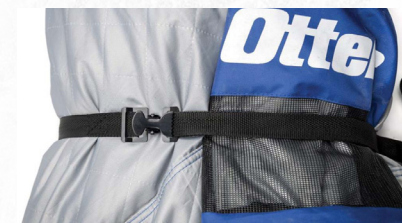
**SAFETY BEACON & FLAG 201425 \$29<sup>99</sup>**  
Improves on-ice low-light visibility. Flashing amber LED provides a beacon to aid in locating. Designed for Otter shelters with integrated external pockets and loops (2019 model years and newer).



**TELESCOPING ALUMINUM SHOVEL 201594 \$34<sup>99</sup>**  
The perfect shovel for the mobile ice fisherman. Ideal for banking portable shelters and clearing slush/snow. Strong Anodized Aluminum Scoop. Telescoping Aluminum Shaft. Polycarbonate T-Handle  
COLLAPSED DIMS: 18" L x 9" W  
EXTENDED DIMS: 26" L x 9" W  
WEIGHT: 1.5 LBS



**HUB CINCH STRAPS 201429 \$11<sup>99</sup>**  
2 Pack. Heavy duty compression straps. Premium webbing 1" W x 66" L. Steel spring buckle. Perfect packing solution for hub style shelters.



**ICE ANCHOR KIT 201042 \$34<sup>99</sup>**  
A universal hub shelter anchoring solution. Each kit comes with 4 anchors and a carry pouch.







**DELUXE ALUMINUM ROLL TOP TABLE**

**201774 \$69<sup>99</sup>**

Perfect for ice fishing and camping. Lightweight and sturdy. Roll-top design makes set-up a breeze and packs down small. Carry bag included for easy transport and storage.

Weight: 5lbs 5oz

Setup dims: 22 ¾" W x 22 ½" L x 22" H

Collapsed dims: 27 ½" x 8" x 8"



**DELUXE DOUBLE DECKER TABLE**

**201622 \$54<sup>99</sup>**

The perfect solution for the ice fisherman that is looking to spend the night on the lake. Ideal for eating in your hub or keeping your gear off the ice. Compact and folds down for easy use and storage. Comes with a carry case.

SETUP: 27" L x 27" W x 27.5" H

COLLAPSED: 36" L x 7" W x 5.5" H / 7.25 lbs



**COMPACT TABLE WITH CUP HOLDERS**

**201623 \$34<sup>99</sup>**  
Designed to maximize functionality without compromising space. Compact and folds down for easy use and storage. Comes with a carry case.

SETUP: 18.5" L x 18.5" W x 17.5" H

COLLAPSED: 24" L x 5" W x 5" H / 3.5 lbs



**XL PADDED TRI-POD CHAIR**

**201624 \$44<sup>99</sup>**

The unique adjustable lumbar design makes this the most comfortable tri-pod ice fishing chair available. Heavy Duty Construction. Compact and folds down for easy use and storage. Comes with a carry case.

SETUP: 21" W x 33" H,

Seat Height 19", Seat Depth 19"

COLLAPSED: 32" L x 5" W x 5" H / 7.5 lbs



**AUGER SHIELD**

**8" DIA 200077 \$89<sup>99</sup>**

**10" DIA 200076 \$99<sup>99</sup>**

Our revolutionary Auger Shield is a full-length design that encases the auger blade. Rugged Roto-Molded polyethylene plastic protects your expensive gear from being damaged by the sharp, metal edge of your auger blade and protects the blade too. A built-in carrying handle makes for easy transport and allows you to put it on the wall for storage. Fits standard length augers.



**6 Gallon Bucket**

**201585 \$14<sup>99</sup>**

This is the perfect bucket for ice fishing with its larger capacity and taller height. It makes an excellent base unit for the Otter Sidekick Ice Fishing Console and Otter Jump Seat. Made of rugged, high-density 90mm plastic, this bucket is ready for anything.



WARNING: Cancer and Reproductive Harm - www.P65Warnings.ca.gov



WARNING: Cancer and Reproductive Harm - www.P65Warnings.ca.gov



**SIDEKICK 201527 \$49<sup>99</sup>**

Universal Ice Fishing Shelter/Bucket Console featuring: Rod pockets, cell phone slots, bait puck holders, tackle/gear tray, and mounts for Otter rod holders. Also mounts on standard 5-6 gallon buckets. Fits Pro Packages Cottage, Cabin, Lodge and all flipovers with cross-link seating.



**MINI SIDEKICK**

**201729 \$39<sup>99</sup>**

Drop-in installation on the sidewall of most sleds. Offers access to tool-holders, bait, phone, tackle trays and more. Compatible with Otter Rod Holder. Pre-molded slots also fits on standards 5-6 gallon buckets.



6 Gallon Bucket not included

**ADJUSTABLE FRONT WIND POLE 200002 \$24<sup>99</sup>**

Provides extra wind support during extreme weather  
Adjusts from 43" to 80" (approx.)



**ADJUSTABLE BACK WIND POLE 201089 \$24<sup>99</sup>**

Provides extra wind support during extreme weather  
Adjusts from 29" to 53" (approx.)



**PRO JUMPSEAT 201619 \$69<sup>99</sup>**

Padded seating area and backrest. Provides extra seating in all Otter Pro & Pro XS X-Over shelters with cross-bar seating when used in combination with the Otter Sidekick (sold separately). Mounts on top of 5-6 gallon buckets. Ideal for fishing outside or in hub-style houses. Folding backrest for compact, easy storage. Easy carry handle.

SETUP DIMENSIONS: 15" L x 13" W x 14" H



Shelter & Sidekick not included



6 Gallon Bucket not included





### SHELTER STORAGE HAMMOCK FOR ROOF 201045 \$39<sup>99</sup>

A universal storage solution for all flipover shelters. Stretchable/ adjustable storage netting. Integrated non-slip hook and loop belt system. Easy installation and removal.



### SHELTER 3-POCKET CARGO NET FOR WALL 201046 \$44<sup>99</sup>

A universal storage solution for all flipover shelters. Stretchable netting with 3 divided pockets keep gear safe and organized on the back wall of the shelter. Integrated non-slip hook loop belt system. Easy installation and removal.



### SHELTER HOOKS 201043 \$16<sup>99</sup>

A universal solution for all flipover shelters. Premium heavy duty aluminum hooks with combination hook and loop non-slip belt attachment. Deep, U-Shape design can mount vertically or horizontally for use in a variety of locations. 3 pack.



WARNING: Cancer and Reproductive Harm - www.P65Warnings.ca.gov

WARNING: Cancer and Reproductive Harm - www.P65Warnings.ca.gov



### EASY FRAME RELEASE LEVER KIT 201728 \$22<sup>99</sup>

These devices are simply designed to make life on the ice easier. If you own a new or existing Otter dating back to 2008, these levers install on our oversize square-tube frame to easily release the sliding poles, even under pressure. Comes in a pack of 8.



### UNIVERSAL BATTERY TRAY 201640 \$14<sup>99</sup>

Foam insert and strap securely holds one standard 12v battery. Mounts to the interior of sled or any flat surface.

DIMENSIONS: 7.5" L x 3.4" W x 5" H



### ADJUSTABLE ROD HOLDER 200067 \$17<sup>99</sup>

The Otter adjustable rod holder allows you to keep your rod steady and secure during long hours on the ice. Features powder-coated steel rod holder perfect for long days on the ice, or fishing a dead stick and multiple lines. Mountable in Otter sleds, wheel houses and most non-Otter branded sleds and shelters. Pivoting arm allows for multiple placement options.

### SLED SHELTER ANCHOR KIT 201730 \$29<sup>99</sup>

The Otter Sled Anchor Kit allows any sled or shelter to be anchored in high-wind conditions. High winds are a factor across the ice belt, especially the Dakotas, Canada, and beyond, making this a must for any die-hard portable house angler. Features 2 sled anchor points + 2 self-tapping ice anchors and quick-release nylon cam-buckle straps to secure the sled/shelter to the ice.



### MULTI-PACK FISH HOUSE PATCH MATERIAL 201044 \$14<sup>99</sup>

12" x 12" 300 Denier polyester fabric swatches, one of each color-black, blue, dark gray, light gray.



### PRO SHELTER STORAGE & BATTERY TRAY 201639 \$29<sup>99</sup>

Designed to fit in all Otter Pro X-Over shelters with seat rails. Adds additional storage space to the curved part of the sled. Holds two standard 12v batteries securely with straps.

DIMENSIONS: 13.5" L x 14" W x 4" H



### FISHING TOWEL 201620 \$9<sup>99</sup>

The only fishing towel designed specifically for ice fishing. Extra large size with hook and loop swivel cam buckle.

DIMENSIONS: 23" L x 15" W x .25" D

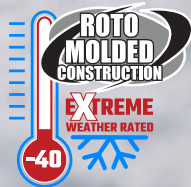




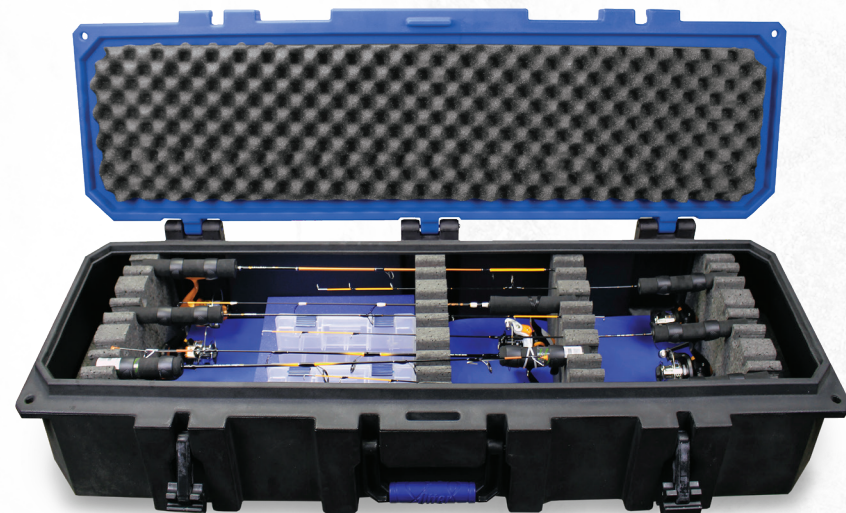
# ROD CASES

## MAXIMUM PROTECTION AND VERSATILITY

Designed for the ultimate ice angler. Roto-Molded in the USA for unmatched strength and durability to protect your investment in rods and reels. Otter rod cases are built with features that matter to those that take the ice game seriously. Cutouts for tackle storage boxes, polyurethane upper and lower foam, proprietary ultra-lock quick release latches, flush mount high-strength nylon handles, nickel plated steel hardware and a built-in lid ruler. Our deep models are the perfect solution for multi-species combos.



WARNING: Cancer and Reproductive Harm - www.P65Warnings.ca.gov



### PRO-TECH 48 DEEP ROD CASE

201432 \$299<sup>99</sup>

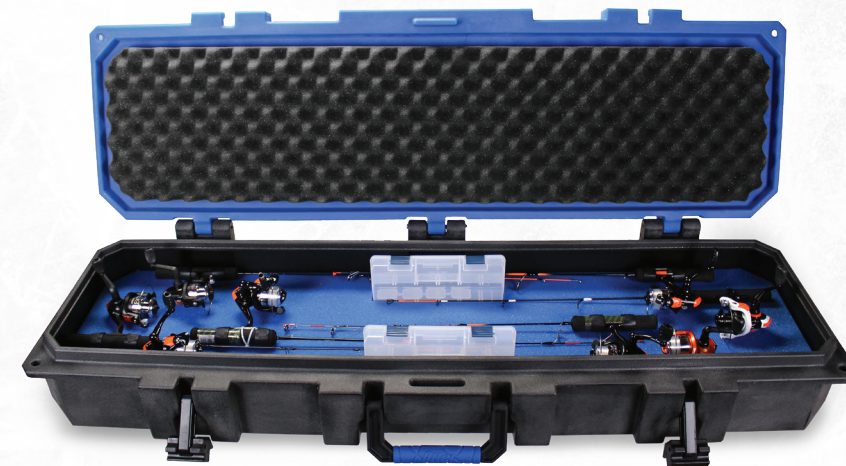
- ▲ HOLDS 8 ROD/REEL COMBOS UP TO 47.5"
- ▲ 48" L X 15.5" W X 9.63" H



### PRO-TECH 40 DEEP ROD CASE

201441 \$249<sup>99</sup>

- ▲ HOLDS 6 ROD/REEL COMBOS UP TO 39.5"
- ▲ 40" L X 15.5" W X 9.63" H



### PRO-TECH 48 ROD CASE

201519 \$229<sup>99</sup>

- ▲ HOLDS 8-10 ROD/REEL COMBOS UP TO 47.5"
- ▲ 48" L X 15.5" W X 7.25" H



### PRO-TECH 40 ROD CASE

201520 \$189<sup>99</sup>

- ▲ HOLDS 6-8 ROD/REEL COMBOS UP TO 39.5"
- ▲ 40" L X 15.5" W X 7.25" H



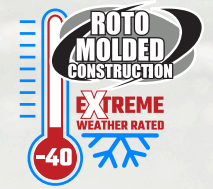




# ATV ACCESSORIES

## EXTREME PROTECTION

Otter Monster Boxes and Accessories add the extra space needed to bring your gear to hunting, fishing, lawn projects or job sites. Thick Roto-Molded polyethylene construction withstands the toughest conditions for years of service.



WARNING: Cancer and Reproductive Harm - www.P65Warnings.ca.gov



- ### ATV AUGER SHIELD/TOOL SLEEVE 200553 \$119<sup>99</sup>
- ▲ EASILY SLIDES ON AND OFF THE OF THE 200543 REAR MONSTER BOX
  - ▲ HIGH IMPACT THICK ROTO-MOLDED POLYETHYLENE CONSTRUCTION
  - ▲ MADE FOR STANDARD LENGTH AUGERS
  - ▲ FITS 10" AUGER
  - ▲ MOLDED-IN CARRYING HANDLE



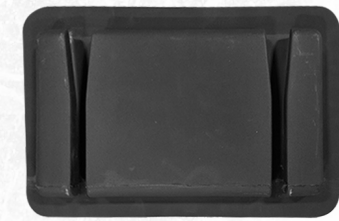
- ### ATV MONSTER BOX (EXTENDED) 200545 \$249<sup>99</sup>
- ▲ EXTENDED LID PROVIDES 2" OF TOP TRAY STORAGE ROOM AND 7" OF DEEP INTERIOR STORAGE
  - ▲ UNIVERSAL FIT FRONT OR REAR MOUNTED
  - ▲ MOLDED-IN TOP TIE DOWN TABS FOR SECURING EXTRA GEAR
  - ▲ HIGH IMPACT HANDLE WITH STAINLESS STEEL DOUBLE LOCK AND HINGES
  - ▲ 3.5 CUBIC FOOT OF SPACE • 22 LBS.
  - ▲ OVERALL DIMENSIONS: 18" L X 36" W X 9" H
  - ▲ 7" INTERIOR DEPTH



- ### REAR MONSTER BOX 200543 \$399<sup>99</sup>
- ▲ DELUXE WRAP AROUND STYLE FITS ON REAR OF ATVS AND SOME SNOWMOBILE MODELS
  - ▲ MOLDED-IN TOP TIE DOWN TABS FOR SECURING EXTRA GEAR
  - ▲ MOLDED-IN ACCESSORY ATTACHMENT SYSTEM ON BOTH SIDES
  - ▲ HIGH IMPACT HANDLE WITH STAINLESS STEEL LOCK AND HINGES
  - ▲ 10.5 CUBIC FOOT OF SPACE • 43 LBS.
  - ▲ OVERALL DIMENSIONS: 35" L X 42" W X 19" H
  - ▲ 14" INTERIOR DEPTH



- ### ATV BUCKET HOLDER 200829 \$44<sup>99</sup>
- ▲ HOLDS A 5 GALLON BUCKET
  - ▲ EASILY SLIDES ON AND OFF THE ACCESSORY ATTACHMENT SYSTEM OF THE 200543 REAR MONSTER BOX
  - ▲ HIGH IMPACT THICK ROTO-MOLDED
  - ▲ POLYETHYLENE CONSTRUCTION



- ### ATV ROD CASE MOUNT 200830 \$29<sup>99</sup>
- ▲ MOUNT ANY OTTER ROD CASE TO THE OTTER REAR ATV BOX WITH THIS ACCESSORY. MAY BE USED TO MOUNT OTHER ITEMS AS WELL.
  - ▲ DIMENSIONS 15.75" X 10"



Above image shows how rod case mounts after installations. Items in image not included



# OTTER TRAILERS

## BUILT FOR WORK

Otter Trailers feature dual molded-in power rails for the ultimate in strength and durability. Two aluminum i-beam rails are molded directly into the trailer body during the manufacturing process to serve as the anchor point for the trailer bed. No drilling holes in the polyethylene body and relying on a bolt and washer to secure your load. Otter frames bolt directly to the power rails providing the highest level of strength and performance.

Otter trailers are purpose-built for consistent, heavy-duty use in all seasons and for a multitude of uses including farm and ranch, landscaping, hunting, fishing or any hauling need. Trailers tow smoothly behind any ATV, garden tractor or small utility vehicle.



TIPPER LATCH



REINFORCED OUTER LIP



RUGGED TURF TIRES



### XPRESS 15 201234 \$499<sup>99</sup>

No matter if you are using the Otter Xpress 15 Off-Road Trailer at home, the cabin, the farm or in your backyard – the Otter Xpress 15 can haul up to 15 Cubic Feet and 1200 Pounds!

SIZE: 15 Cubic feet  
LOAD CAPACITY: 1200lb  
DIMENSIONS: 65"L x 36"W x 14"D  
TIRES: Flotation turf tire, 18" x 7" x 8"  
HUBS: Greasable bearings - integrated/needle  
HITCH STYLE: Pin  
FEATURES: Industry strongest Roto-Molded trailer body  
Molded-in power-rail frame  
Tilt-n-swivel side & rear dumping w/ tipper latch  
High clearance axle



### XPRESS 20 201239 \$599<sup>99</sup>

The Otter Xpress 20 can haul up to 20 Cubic Feet and 1200 Pounds!

SIZE: 20 Cubic feet  
LOAD CAPACITY: 1200lb  
DIMENSIONS: 65"L x 46"W x 14"D  
TIRES: Flotation turf tire, 18" x 8.5" x 8"  
HUBS: Greasable bearings - integrated/needle  
HITCH STYLE: Pin  
FEATURES: Industry strongest Roto-Molded trailer body  
Molded-in power-rail frame  
Tilt-n-swivel side & rear dumping w/ tipper latch  
High clearance axle



### SUPER XPRESS 20 201244 \$729<sup>99</sup>

The Otter Super Xpress 20 can haul up to 20 Cubic Feet and 1500 Pounds! This is the most rugged trailer that we offer at Otter®.

SIZE: 20 Cubic feet  
LOAD CAPACITY: 1500lb  
DIMENSIONS: 65"L x 46"W x 14"D  
TIRES: Flotation turf tire, 18" x 9.5" x 8"  
HUBS: Greasable high-speed tapered roller bearings, 4-bolt-hub  
HITCH STYLE: 2" ball coupler  
FEATURES: Industry strongest Roto-Molded trailer body  
Molded-in power-rail frame  
Tilt-n-swivel side and rear dumping w/ tipper latch  
High clearance axle



Receiver & Ball  
Not Included

### Flipper Hitch Adapter 200948

\*see page 28

WARNING: Cancer and Reproductive Harm - www.P65Warnings.ca.gov







**Otter**

©2025 Otter® Outdoors. Printed in the USA.

[WWW.OTTEROUTDOORS.COM](http://WWW.OTTEROUTDOORS.COM)

